

JP STRAIGHT PLASTIC BELT CONVEYORS

HANDLING OF ANY PRODUCT IN ANY INDUSTRY



SAFETY FIRST WITH ATEX CERTIFIED STRAIGHT PLASTIC BELT CONVEYORS

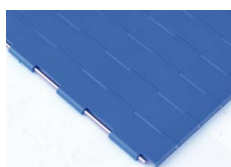
The plastic belt conveyors with antistatic panels are especially designed for use in areas with explosion hazards.

KPA 30

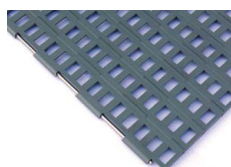
The belt type KPA 30 is a plastic panel (modular) belt which is developed for handling a variety of products. The belts are suitable for use in almost all types of industry, especially in the processing industry. The material of the belt is Acetal or Polyamide.

The gap between adjacent modules is extremely small and as a consequence the belt presents a very smooth, solid surface which is particularly suitable for handling of tins, cans and bottles.

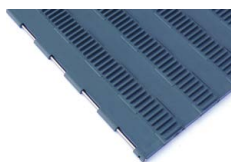
BELT TYPES



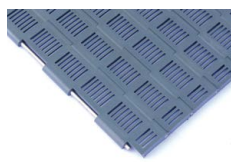
KPAD-30



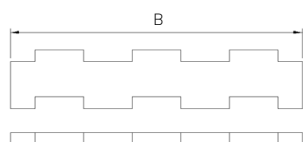
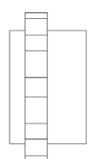
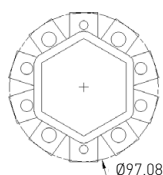
KPAOX-30 (Only PA)



KPADR (Only PA)



KPAO-30 (Only PA)



PANEL MATERIAL

Black = (POM) Antistatic
Brown = Acetal (POM)
Blue = Acetal (POM)
Grey = Glass fibre reinforced Polyamide (PA)



TECHNICAL SPECIFICATIONS

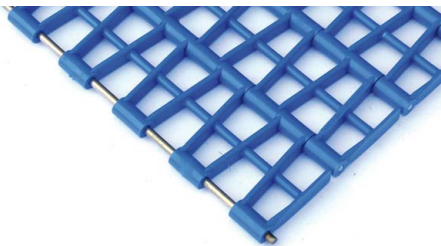
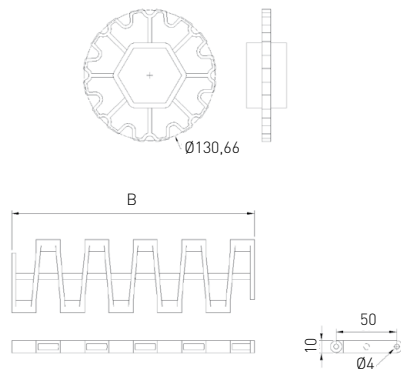
Belt pitch	30 mm
Rod diameter	4 mm
Rod material	Stainless Steel 1.4301
Panel material	<ul style="list-style-type: none"> Acetal (POM) Glass fibre reinforced Polyamide (PA)
Panel thickness	9 mm
Belt width	Minimum 100 mm (steps of 100 mm)
Allowed belt load	1850 kg/meter belt width

JP STRAIGHT PLASTIC BELT CONVEYORS

HANDLING OF ANY PRODUCT IN ANY INDUSTRY

KRM 50

KRM 50 panel belts have a large open area of 60%. The panels have a thickness of 10 mm and a longitudinal pitch of 50 mm. The connecting rods are of stainless steel. The rods are slightly shorter than the overall width of the belt and secured by small plastic pegs, press-fitted into the cross rod holes in the outermost panels. The material of the belting is Acetal (POM) or glass fibre reinforced polyamide (PA) of high wear resistance and high chemical stability.



TECHNICAL SPECIFICATIONS

Belt pitch	50 mm
Rod diameter	4 mm
Rod material	Stainless Steel 1.4301
Panel material	<ul style="list-style-type: none"> Acetal (POM) Glass fibre reinforced Polyamide (PA)
Panel thickness	10 mm
Belt width	100 mm (steps of 100 mm)
Allowed belt load	1850 kg/meter belt width

KPA/KRM APPLICATIONS:

- Processing industry
- Canning industry
- Pharmaceutical industry
- Food industry

